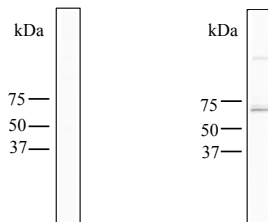


KZ625 mouse IgM isotype control antibody (Clone No.MK02)		Keyword	
Type	Monoclonal Antibody		
Immunogen	KLH		
Raised in	Mouse		
Myeloma	P3U1		
Clone number	MK02		
Isotype	IgM, kappa		
Source	Serum-free medium		
Purification notes	ProteinL	Application	
Cross Reactivity		WB	0.1-10 µg/mL
Label	Unlabeled	IHC	0.1-10 µg/mL
Formulation	Lyophilized powder	ICC	Not tested
Contents	100 µg	ELISA	Not tested
Reconstitution	Reconstitute at 100 µg/100 µL in DDW.	FCM	Not tested
Buffer	PBS [containing 2% Block Ace as a stabilizer, 0.1% Proclin as a bacteriostat]	Neutralization	Not tested
Storage	This product is shipped at ambient temperature. Upon receipt, we recommend to store it immediately below -20°C	IP	Not tested

Western Blotting
**KZ625
(control
antibody)**

 KO579 Rat PAG
(anti rat PAG mAb)


Sample: rat brain tissue lysate
 Primary antibody concentration: 10 µg/ml
 Secondary antibody: HRP-conjugated anti-mouse IgM

Note

Reference

WARNING AND PRECAUTION

1. Not for diagnostic use. The safety and efficacy of product in diagnostic or other clinical uses has not been established.
2. Harmful by inhalation, in contact with skin and if swallowed. Do not breathe dust. Avoid contact with skin and eyes.
3. If contact with skin and eyes, wash all affected areas with large volume of water. If inhaled remove to fresh air. In severe case obtain medical attention.
4. Wash hand thoroughly after handling the product.
5. Do not use this product if container is broken or some contaminants are detected.
6. When preserving the product, Close the container, ensure it does not fall aside or down.
7. Dispose of the container and expired reagents in accordance with federal, state and local government regulations.
8. Do not use the container and accessories of the product for other purpose.

取り扱い上の注意

- この添付文書をよく読んでから使用して下さい。
1. 本品は、研究用試薬であり、医薬品その他の目的にはご使用になれません。
 2. 取り扱い中は皮膚、粘膜、着衣に触れたり、目に入らないように適切な措置を行って下さい。
 3. 誤って目や口に入った場合は、水で十分に洗い流すなどの応急処置を行い、必要があれば医師の手当を受けて下さい。
 4. 取り扱い後には手洗いを十分に行ってください。
 5. 容器の破損、異物混入等異常が認められた物は使用しないで下さい。
 6. 試薬を保管する場合は、蓋をし、転倒落下防止を確実にし、指定の貯蔵方法で保管して下さい。
 7. 使用後の容器は、廃棄物に関する規定に従って処理して下さい。
 8. 容器、付属品等の他目的への転用は保証できません。