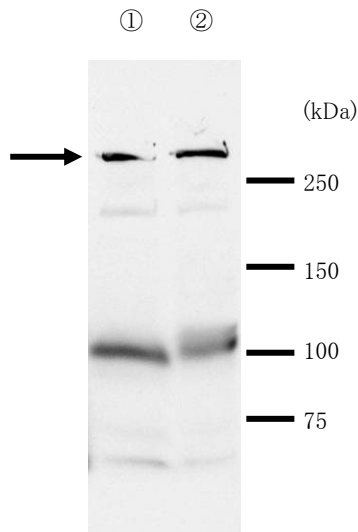


**Anti Human MDC1(NFBD1/KIAA0170)
Polyclonal Antibody**

MDC1 : mediator of DNA damage checkpoint protein 1

| | |
|---------------------|---|
| Package Size | 25 μ g (100 μ L / vial) |
| Format | Rabbit polyclonal antibody 0.25mg/mL |
| Buffer | PBS [containing 2% Block Ace as a stabilizer, 0.1% Proclin as a bacteriostat] |
| Storage | Store below -20°C Once thawed, store at 4°C. Repeated freeze-thaw cycles should be avoided. |
| Purification method | This antibody was purified from rabbit serum immunized with partial peptide of human MDC1 by peptide affinity chromatography. |
| Working dilution | For western blotting ;1~5 μ g/mL |



Western blotting

Sample :

- ① 293T cell lysate
- ② HeLa cell lysate

Preparation of antibodies and instruction :

Miki Y, Yoshida K

Department of Molecular Pathogenesis, Division of Pathophysiology,
Medical Research Institute, Tokyo Medical and Dental University

Anti Human MDC1(NFBD1/KIAA0170) Polyclonal Antibody

MDC1 : mediator of DNA damage checkpoint protein 1

【Reference】

1. Lou Z. et al. : J Biol Chem. 2003 Apr 18;278(16):13599-602
2. Peng A. et al. : J Biol Chem. 2003 Mar 14;278(11):8873-6
3. Xu X. et al. : J Biol Chem. 2003 Mar 7;278(10):8795-803
4. Goldberg M. et al. : Nature. 2003 Feb 27;421(6926):952-6
5. Lou Z. et al. : Nature. 2003 Feb 27;421(6926):957-61
6. Stewart GS. et al. : Nature. 2003 Feb 27;421(6926):961-6
7. Shang YL. et al. : J Biol Chem. 2003 Feb 21;278(8):6323-9

Manufacturer



7-1-14Minatojimaminami-machi, Chuo-ku, Kobe, Japan 650-0047

Telephone: +81-78-306-0295 FAX: +81-78-306-0296

URL: <http://www.transgenic.co.jp> techstaff@transgenic.co.jp