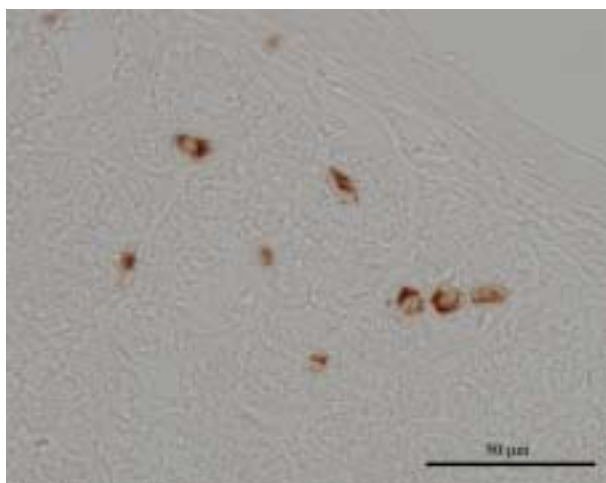


## Anti Rat Ghrelin Polyclonal Antibody

Package Size	25 $\mu$ g (100 $\mu$ L / vial)
Format	Rabbit polyclonal antibody 0.25mg/mL
Buffer	PBS [containing 2% Block Ace as a stabilizer, 0.1% Proclin as a bacteriostat]
Storage	Store below -20 Once thawed, store at 4 . Repeated freeze-thaw cycles should be avoided.
Purification method	This antibody was purified from rabbit serum immunized with partial peptide of Rat Ghrelin by peptide affinity chromatography.
Working dilution	For Immunohistochemistry ; 0.01 $\mu$ g/mL ~



### Immunohistochemistry

Sample : Rat Stomach

Preparation of antibodies and instruction :

Yamazaki M, Sakata I

Dep. of Regulation- Biology, Faculty of Science, Saitama University

## Anti Rat Ghrelin Polyclonal Antibody

### 【Reference】

1. Kojima M. et al. : Nature 1999 Dec 9;402(6762):656-60
2. Nakazato M. et al. : Nature 2001 Jan 11;409(6817):194-8
3. Sakata I. et al. : Neurosci Lett. 2003 May 22;342(3):183-6

#### Manufacturer



7-1-14 Minatojimaminami-machi, Chuo-ku, Kobe, Japan 650-0047

Telephone: +81-78-306-0295      FAX:+81-78-306-0296

URL:<http://www.transgenic.co.jp>      [techstaff@transgenic.co.jp](mailto:techstaff@transgenic.co.jp)