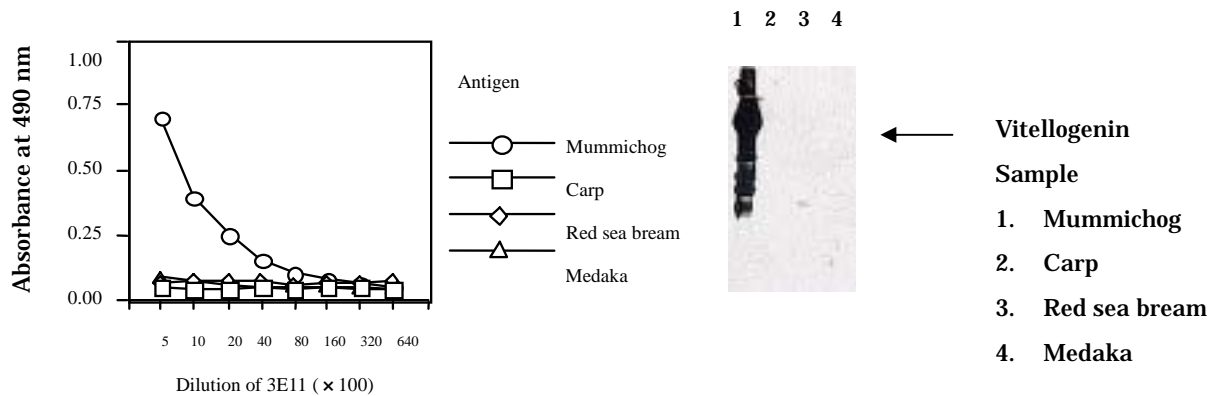


Anti Mummichog Vitellogenin Monoclonal Antibody (Clone No. 3E11)

Package Size 100 μ g (100 μ L/vial)
 Format Mouse monoclonal antibody 1.0mg/mL
 Buffer 10mM sodium phosphate , 0.15M sodium chloride , 1%BSA , pH7.4
 Storage Store below -20
 Once thawed, store at 4 . Repeated freeze-thaw cycles should be avoided.
 Clone No. 3E11
 Subclass IgG1
 Immunogen source Mummichog vitellogenin purified from serum of 17 β -estradiol induced fish
 Working dilution Immunoblotting 1 μ g/ml
 ELISA 1 ~ 2 μ g/ml(Fixed quantity system by ELISA has not been established.)
 Specificity < cross reactivity >

	Mummichog	Carp	Red sea bream	Medaka
ELISA	(+)	(-)	(-)	(-)
Immunoblotting	(+)	(-)	(-)	(-)



ELISA

Antigen:

Carp vitellogenin was purified from female serum.Red sea bream,mummichog and medaka vitellogenins were purified from male fish indused with 17 β -estradiol. Each antigen were diluted to 1 μ g/mL and added to microtiter plate.

Primary antibody:

IMMUNOBLOTTING

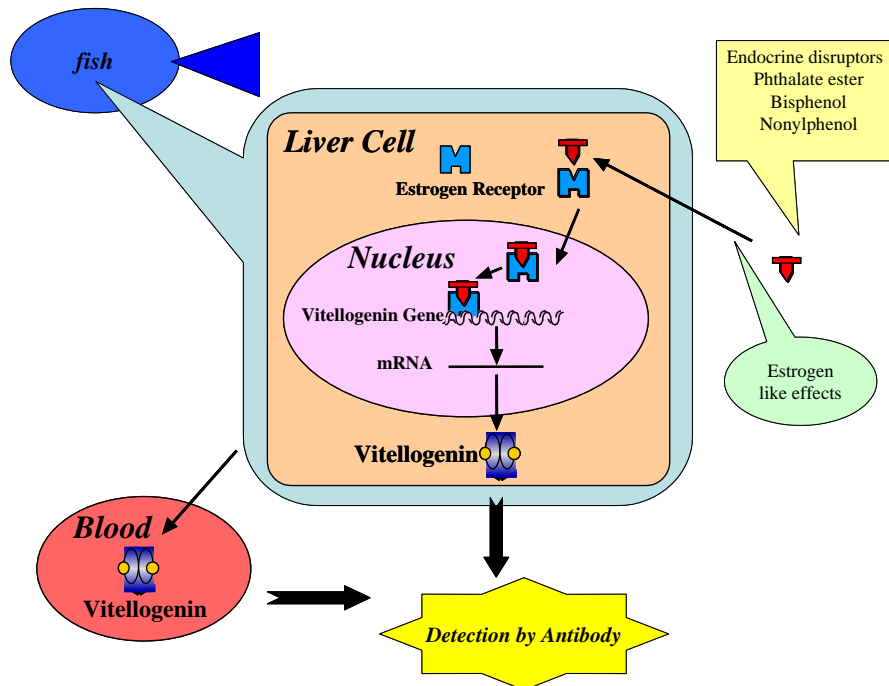
Sample :

Plasma(dilution 1:40)from female fish (carp) or male fish induced with 17 β -estradiol(red sea bream,mummichog and medaka)

Primary antibody:

3E11 diluted 1:1000

Anti Mummichog Vitellogenin Monoclonal Antibody (Clone No. 3E11)



【 References 】

1. N.Hiramastu, M.Shimizu, H.Fukada, M.Kitamura, K.Ura, H.Fuda, and A.Hara, (1997) *Comp. Biochem Physiol.* 118C(2) 149-157
2. N.Hiramastu and A.Hara. (1996) *Comp Biochem Physiol.* 115A(3) 243-251
3. H.Okumura, A.Hara, F.Saeki, T.Todo, S.Adachi and K.Yamauchi, (1995) *Fisheries Science* , 61(2) 283-289
4. T.Matsubara, T.Wada and A.Hara, (1994) *Comp Biochem Physiol.* 109B(4) 545-555
5. Y.Tao, A.Hara, R.. G. Hodson, L. C. Woods III and C. V. Sullivan, (1993) *Fish Physiol. Biochem.* 12(1) 31-46
6. A.Hara, C. V. Sullivan and W.W. Dickhoff, (1993) *Zool. Sci.*, 10(2), 245-256

Manufacturer

 **Trans Genic Inc.**

7-1-14 Minatojimaminami-machi, Chuo-ku, Kobe, Japan 650-0047

Telephone: +81-78-306-0295 FAX: +81-78-306-0296

URL: <http://www.transgenic.co.jp> techstaff@transgenic.co.jp