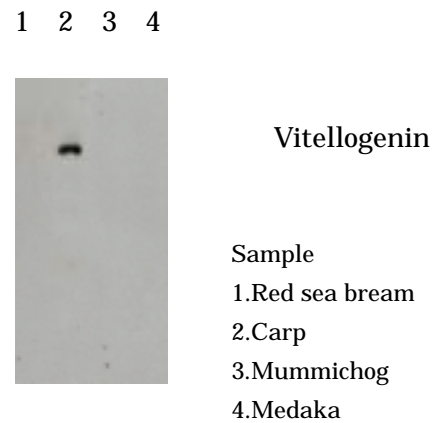
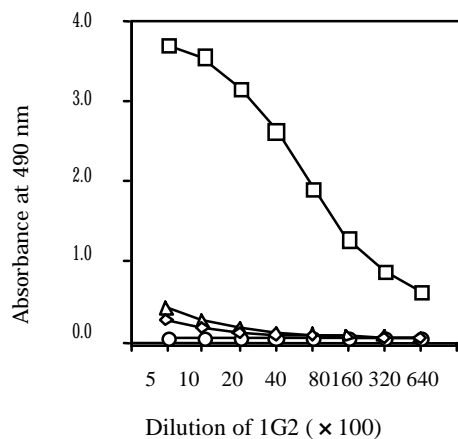


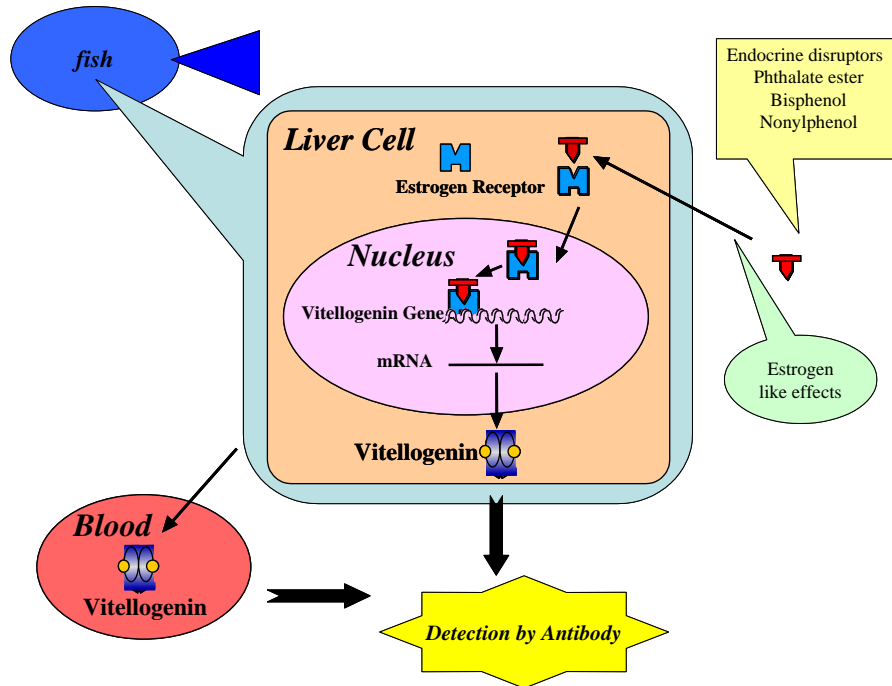
Anti Carp Vitellogenin Monoclonal Antibody (Clone No.1G2)

Package Size 100 μ g(100 μ l/vial)
Format Mouse monoclonal antibody 1.0mg/ml
Buffer 10mM sodium phosphate , 0.15M sodium chloride , 1%BSA , pH7.4
Storage Store below -20 .
 Once thawed, store at 4 . Repeated freeze-thaw cycles should be avoided.
Clone No. 1G2
Subclass IgG1
Immunogen source Carp lipovitellin purified from eggs
Working dilution Immunoblotting 1 μ g/ml ;
 ELISA 0.1 ~ 1 μ g/ml
 (Fixed quantity system by ELISA has not been established.)
Specificity <cross reactivity>

| | Carp | Medaka | Mummichog | Red sea bream |
|----------------|------|--------|-----------|---------------|
| ELISA | (+) | (±) | (-) | (-) |
| Immunoblotting | (+) | (-) | (-) | (-) |



Anti Carp Vitellogenin Monoclonal Antibody (Clone No.1G2)



【References】

1. N.Hiramastu, M.Shimizu, H.Fukada, M.Kitamura, K.Ura, H.Fuda, and A.Hara, (1997) *Comp. Biochem Physiol.* 118C(2) 149-157
2. N.Hiramatsu and A.Hara. (1996) *Comp Biochem Physiol.* 115A(3) 243-251
3. H.Okumura, A.Hara, F.Saeki, T.Todo, S.Adachi and K.Yamauchi,(1995) *Fisheries Science* , 61(2) 283-289
4. T.Matsubara, T.Wada and A.Hara, (1994) *Comp Biochem Physiol.* 109B(4) 545-555
5. Y.Tao, A,Hara, R.. G. Hodoson, L. C. Woods III and C. V. Sullivan, (1993) *Fish Physiol. Biochem.* 12(1) 31-46
6. A.Hara, C. V. Sullivan and W.W. Dickhoff,(1993) *Zool. Sci.*, 10(2), 245-256

Manufacturer



7-1-14 Minatojimaminami-machi, Chuo-ku, Kobe, Japan 650-0047

Telephone: +81-78-306-0295 FAX:+81-78-306-0296

URL:<http://www.transgenic.co.jp> techstaff@transgenic.co.jp